

PLATFORM OVERVIEW



BlueCherry Intelligent Supply Chain Platform for Fashion Manufacturing

From design to delivery. From returns to renewal. From data to intelligence.

BlueCherry is the only purpose-built platform designed to manage the full lifecycle of a fashion product, from concept and sourcing to production, fulfillment, returns, recycling, and next-generation product creation.

- Modernize on your terms.
- Gain AI intelligence everywhere.
- Build a more profitable and sustainable operation.

Fashion manufacturing has entered a new era.

Fashion manufacturers are no longer measured only by how quickly they design and deliver products. They are now judged on speed, agility, cost control, sustainability, traceability, return efficiency, and the ability to operate with intelligent automation.

Yet many organizations still rely on disconnected systems that were never built to manage today's realities.

BlueCherry changes that.

The BlueCherry Intelligent Supply Chain Platform connects every critical workflow across product creation, manufacturing, distribution, commerce, returns, compliance, and circularity, all powered by trusted data and embedded AI.



One platform for every operational priority

Fashion businesses need one connected operating model, not ten disconnected applications.

BLUECHERRY UNIFIES:

01

Product creation

PLM, BOMs, material control, costing

02

Core operations

ERP, sourcing, vendor management, inventory, finance

03

Production

Shop Floor Control, MES, labor visibility

04

Quality

QA, SQC, supplier quality

05

Commerce

OMS, B2B, eCommerce connectivity

06

ESG + circularity

DPP, returns, reuse, recycle, compliance

BlueCherry PLM

Build better products faster.

The most expensive mistakes in fashion often begin before production starts.

BlueCherry PLM helps teams accelerate product development while maintaining tight control over product specifications, BOM tracking & accuracy, costing, and supplier collaboration.

Benefits:

- Faster concept-to-sample cycles
- Better BOM governance
- Cleaner handoff into sourcing and ERP
- Reduced rework downstream
- Improved margin planning



BlueCherry ERP

Control the business behind the brand.

BlueCherry ERP serves as the operational engine that coordinates vendors, purchase orders, inventory, allocations, costing, and financial performance.

With a purpose-built fashion data model, teams gain stronger visibility and faster decision making.

Benefits:

- Better supplier coordination
- Stronger margin visibility
- Lower inventory friction
- Faster intelligent planning cycles
- Improved working capital control



BlueCherry Shop Floor Control

Turn factories into real-time decision centers.

BlueCherry Shop Floor Control (SFC) connects manufacturing activity directly to management insight with real-time production tracking.

Instead of waiting for yesterday's reports, teams can act in real time to live production issues.

Benefits:

- Fewer bottlenecks
- Improved line efficiency
- Increase labor productivity
- Increased throughput
- Visibility into WIP movement
- Instant ID of exceptions & faster intervention
- Reduced waste



BlueCherry SQC & SQS

Build quality into every step.

Quality should not be something discovered at the end of production.

BlueCherry embeds quality workflows throughout operations to reduce defects, improve consistency, and strengthen customer trust.

Capabilities:

- Inline QA checkpoints
- Root cause analysis
- Supplier scorecards
- Corrective action workflows



OMS, B2B and eCommerce

Connect demand directly to supply.

Many brands lose efficiency because customer demand lives separately from operational execution.

BlueCherry connects wholesale, B2B, eCommerce, and order management workflows to production and inventory realities.

Benefits:

- Better fill rates
- Faster fulfillment
- Improved retailer collaboration
- Stronger omnichannel visibility
- Less friction between selling and shipping



BlueCherry Intelligent Supply Chain

One platform from design to delivery, return, recycling and reuse

Most technology platforms stop once the product ships.

BlueCherry continues managing the entire product lifecycle after delivery—where significant cost recovery, sustainability value, and competitive advantage now exist.

End-to-end managed by one platform:

01 Design

Create products with material transparency and sustainability targets in mind.

02 Source

Select compliant suppliers and approved materials.

03 Produce

Manufacture efficiently with quality and traceability.

04 Deliver

Distribute intelligently across wholesale, retail, and DTC channels.

05 Return

Capture product returns with structured workflows.

06 Repair

Route reusable goods into refurbishment processes.

07 Recycle

Convert unusable goods into reusable raw materials.

08 Reuse

Feed recycled materials back into future BOMs and product designs.

09 Renew

Turn waste streams into profitable future inventory.

ESG and AI at the Core

BlueCherry ESG is the intelligence layer that makes circularity possible.

Circularity, DPP readiness, ethical sourcing, and reliable AI insights all depend on one thing: trusted, connected data.

BlueCherry ESG sits at the center of the Intelligent Supply Chain Platform to manage:

01 Traceability

Where materials came from, who handled them, how they moved.

02 Compliance

Labor, sourcing, environmental, vendor certifications.

03 Circularity

Track returns, recycled content, reuse pathways.

04 DPP readiness

Product-level lifecycle transparency.

05 AI everywhere

Because data is normalized across BlueCherry and third-party systems, AI can deliver real intelligence instead of conflicting numbers.

06 Ask AI:

- Which suppliers create ESG risk?
- Which returns can be monetized fastest?
- Which materials should be redesigned?
- Where are compliance gaps emerging?
- How can waste be reduced next season?

Workflow apps to modernize on your terms

Solve what matters first.

Not every company wants to replace everything.

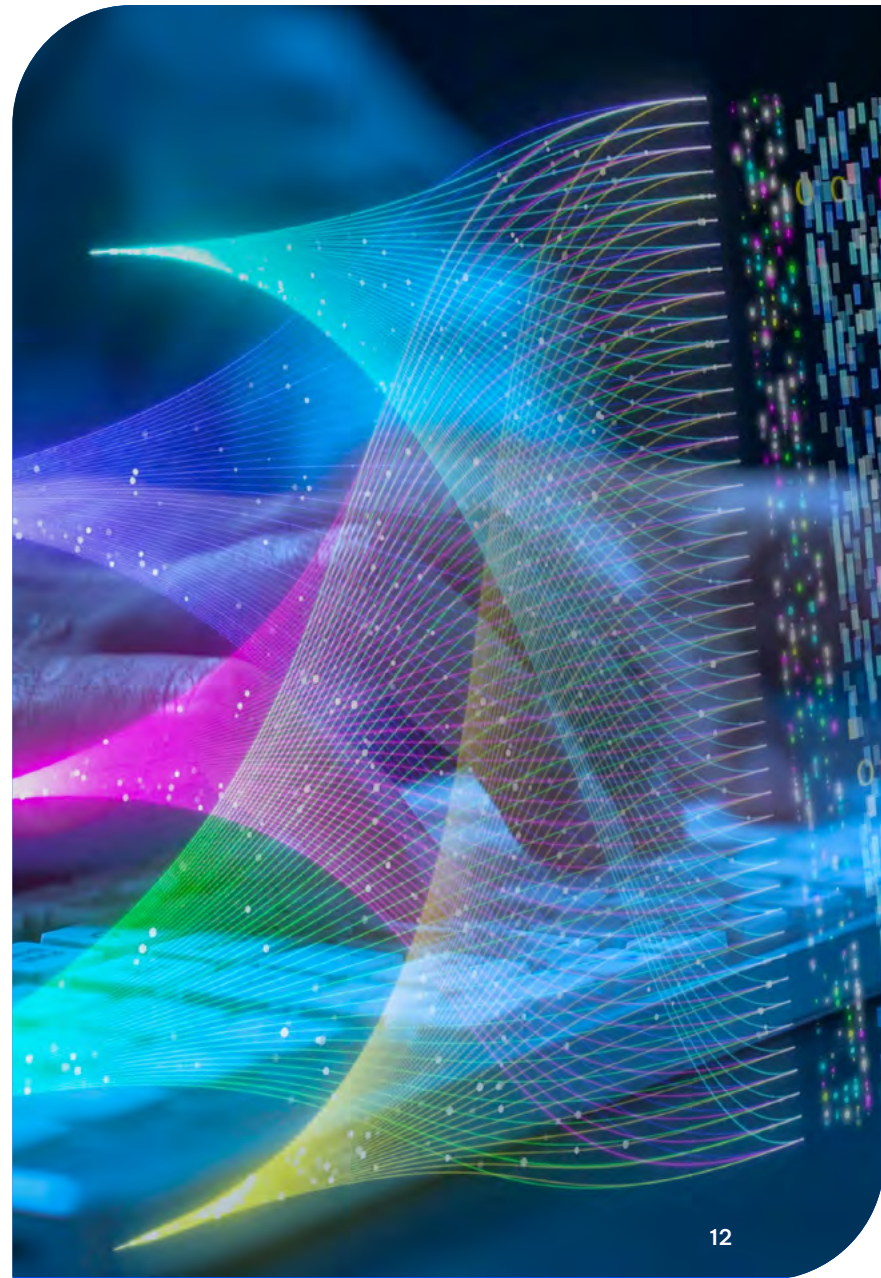
BlueCherry enables modular modernization. Deploying business apps and workflows side-by-side with your current ERP or legacy infrastructure.

Start where value is highest:

- ESG readiness
- Returns management
- Circularity workflows
- AI executive dashboards
- Production visibility
- Vendor collaboration
- Planning intelligence

Build fast:

Create apps and agentic workflows to automate approvals, escalations, supplier onboarding, returns routing, and more.



See how one global fashion brand turned returns into value creation.

01

Challenge

- Rising returns costs
- No recycle visibility
- Manual disposition processes
- ESG pressure increasing

02

Solution

- Returns orchestration
- Quality grading
- Recycle routing
- Material recovery tracking
- ESG reporting
- BOM reuse integration

03

12-month results

- 38% faster returns processing
- \$3.8M recovered product value
- \$2.1M raw material reuse savings
- 24% lower disposal costs
- 31% lower manual labor effort
- Returns moved from cost center to profit lever.

Why BlueCherry?

Leading fashion manufacturers choose BlueCherry because it is the only purpose-built platform for fashion that combines:

- Design to delivery execution
- Returns + recycle + reuse workflows
- ESG + DPP readiness
- AI everywhere
- Trusted cross-platform data
- Modular modernization
- Rapid ROI

BlueCherry enables modular modernization. Deploying business apps and workflows side-by-side with your current ERP or legacy infrastructure.





BlueCherry Intelligent Supply Chain Platform

From design to delivery.

From return to renewal.

From data to intelligence.

To learn more or to request executive strategy session, contact sales@cgsinc.com or visit www.BlueCherry.com.



The right fit